

# Year 3

## St Oswald's Primary School



**Mrs Hall-Murray, Mrs MacIver, Miss English  
and Mrs McCleod (Tuesday afternoon)**

# Welcome to Year 3 and the start of Key Stage 2

I hope that your child is ready to enjoy  
the exciting work in the coming  
academic year.



# The School Day



**Doors will open at 8.30**

**Children can be collected at 15.00  
from the classroom.**

# Typical Daily Routine

Register, maths blast, pobble work and SPaG questions.

Guided reading, times tables challenges, reading blast and pre-teach.

Morning lessons - Maths/English/French

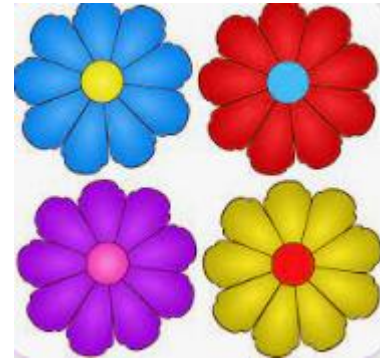
Afternoon lessons – Foundation Subjects



# Rewards

As a school, we reward our children in many ways, including:

- Achievers certificates
- House points
- Table points



# What can my child bring to school?

## Bags:

Small bag as lockers are not very big and all belongings must be kept in personal lockers.

## Reading book:

Children are welcome to bring in a reading book.



# What can my child bring to school?



## **Water:**

As in Key Stage 1, children are encouraged to bring a water bottle to school. Please remind them to take the bottles home daily so that they can be washed and refilled. Water bottles are kept by tables.

## **Snacks:**

Children can bring one piece of fruit or vegetable which can be eaten at break time.

# English Homework

**Spellings** – will be sent home on Monday (tested on Friday).

**Reading comprehension / SPaG** – sent home as a paper copy on a Monday or set on Purple Mash.

**Reading** – books will be sent home on a Thursday and returned to school on Monday (if children have finished reading them).





# Maths Homework

**Maths homework** will be set on a Monday. Either on purple mash (to be completed online) or on paper. It is to be returned to school the following Monday.

## **Timestable Rockstars**

<https://ttrockstars.com>

This is a fantastic resource which enables children to develop their recall of multiplication facts.

**Garage** – table facts can be restricted by the class teacher.

**Studio** - a range of questions up to  $12 \times 12$

**Arena** – multiplayer games

The site is monitored weekly by class teachers.



# Writing

We study the following text types:

Letter

Instructions

Persuasive

Information

Poetry



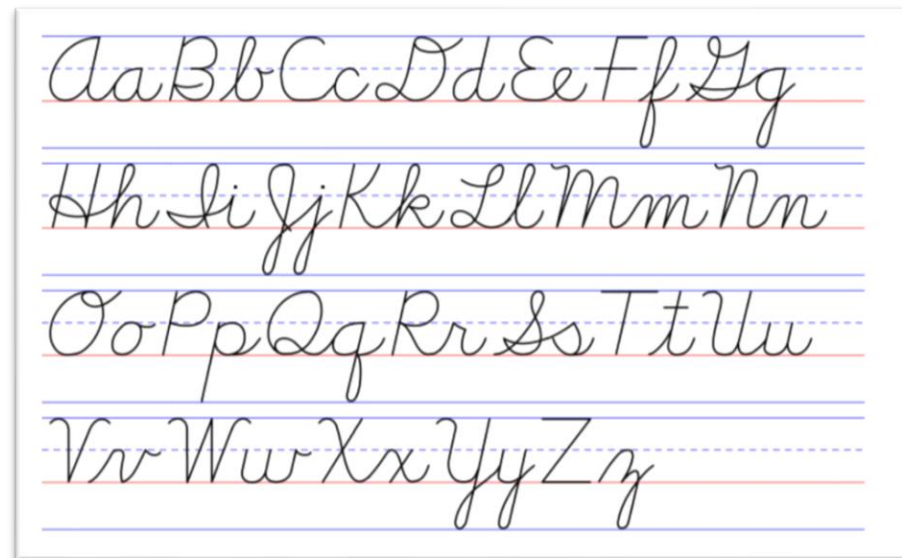
Biography

Narrative

Reports

# Handwriting

Handwriting is a key focus for the class and children will focus on formation and joins. Additional handwriting intervention sessions will be provided to children who require further help.



# Reading

Children working beyond Phase 5 in Phonics will still take home 2 levelled reading books and one book for pleasure.

Our new books provide age appropriate and engaging content for children through a variety of genres and styles.

When children complete the reading schemed books, they will be invited to continue to use the library to access reading books for pleasure.



# Reading



## Guided reading

Takes place every week.

## Reading comprehension

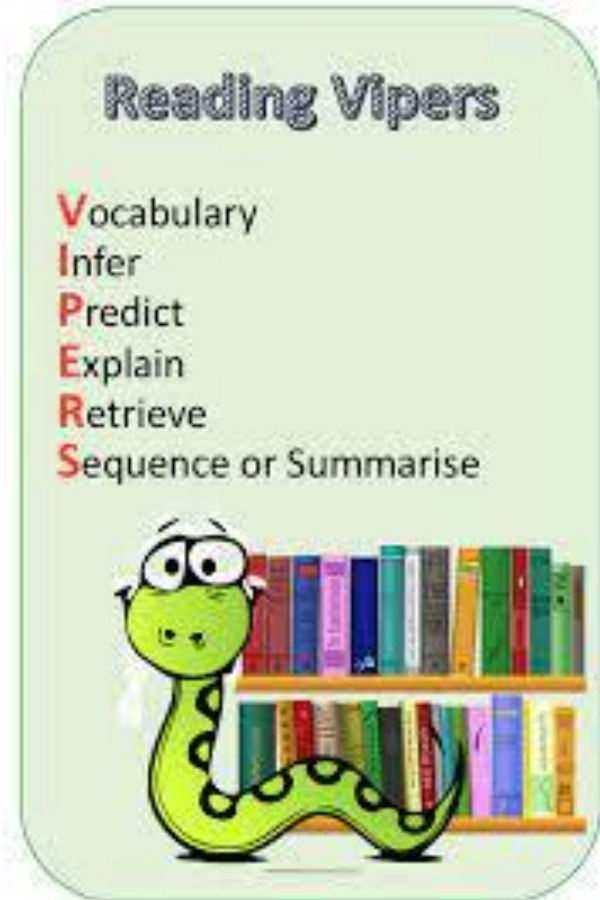
Every week children will complete a set of questions based on different texts.

## Class readers

Frequently reading for pleasure together

# Reading

Reading blast sessions will take place twice a week. Each session will focus on one of the Reading Vipers.





# Maths Curriculum

White Rose Maths

White Rose Maths offers a 'small steps' progression and yearly frameworks which helps children develop their conceptual understanding of mathematics by using concrete objects, pictorial representations and abstract thinking.

This inclusive approach is based on the principles of cognitive psychology and child development.

# Maths Curriculum

Place Value

Addition, Subtraction, Multiplication and Division

Money

Statistics

Length and Perimeter

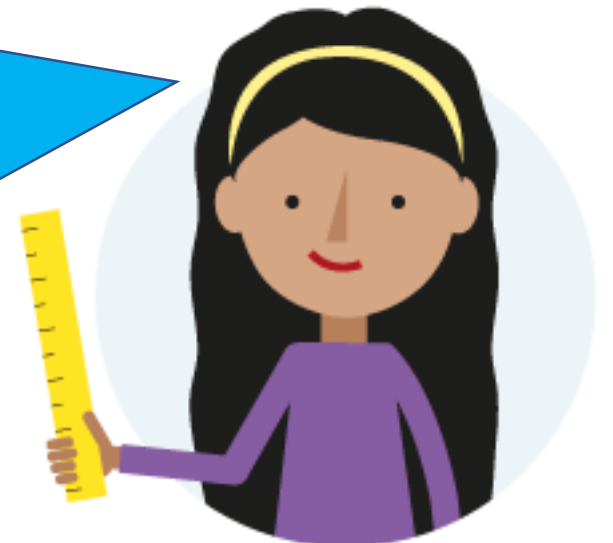
Fractions

Time

Properties of shapes

Mass and Capacity

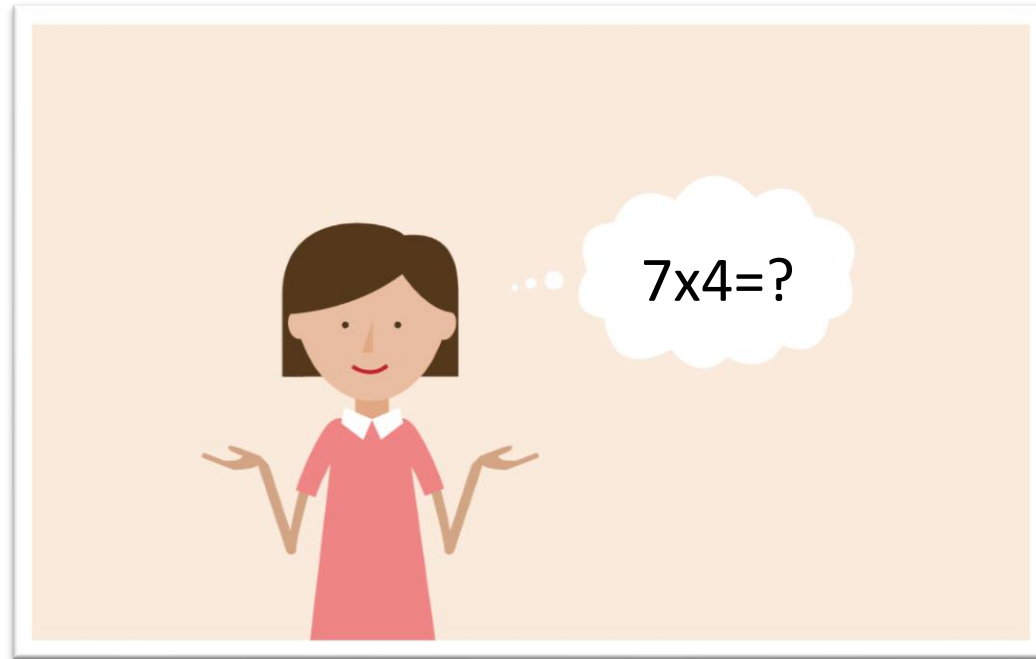
There will be a big focus on reasoning and problem solving skills within each topic. We will cover mental maths strategies throughout the year, as well as table facts.





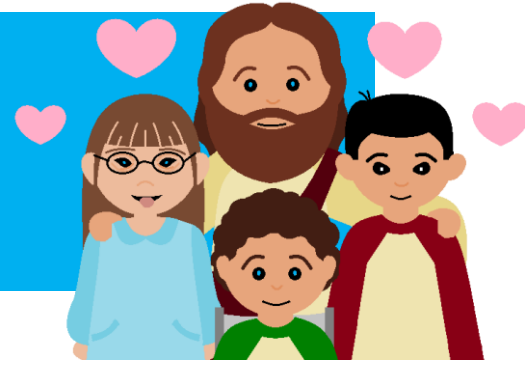
# Times tables

Children will be tested on their times tables at the end of Year 4



National Curriculum coverage for Year 3 is  $3x$ ,  $4x$  and  $8x$ , however we will cover all tables up to  $12x$  this year and next.

# RE & RHE



We follow the **Come & See** programme

**Other Faiths** focus weeks - Islam and Judaism



# Relationship and Health Education

**Ten:Ten**  
Resources

We aim to provide a fully comprehensive curriculum which equips children with essential knowledge and understanding to enable them to build healthy and positive relationships with themselves, others and God.

Our children are growing up in an ever-changing world and may be influenced and affected by many different factors such as the online world and social media. Our programme covers a variety of topics including mental health and dealing with difficult emotions, respecting our bodies, puberty and changes, positive body image and making healthy choices.

By following the Ten:Ten 'Life to the Full' programme, we are giving our children the age-appropriate information they need to help them to grow in confidence, faith and love and build healthy relationships with those around them.



# Controversial or sensitive

We would like to reassure parents that we are aware of the sensitive issues and questions that may arise as part of the teaching of this subject.

Our RHE policy dictates that staff would deal with these issues in a sensitive and age appropriate manner, in line with the teachings of the Church.

Parents would be informed of any questions posed or follow up conversations they may need to have with children at home and (where appropriate) any safeguarding issues that may arise in light of lessons taught.

For more information regarding Relationship and Health Education, please follow the link [HERE](#) which will take you to the relevant section of our school website



# Foundation Subjects



**Science** – Animals including Humans, Rocks, Plants, Forces and Light and Shadows.

**History** – Stone Age, Iron Age and the Egyptians.

**Geography** – The Water Cycle, Where we Live and Changing Jobs.

There are lots of cross curricular links – **Art and DT** will be closely linked to other areas of the curriculum

# Physical Education

PE – Wednesday and Friday

- Children should come to school in their P.E t-shirt with school cardigan or jumper and tracksuit bottoms on their allocated days, an additional tracksuit top to stay warm is optional.
- In the event of inclement weather, P.E lessons may be moved, shortened or, unfortunately, not take place.
- As P.E lesson will take place outside, children are permitted to wear trainers rather than plimsoles. Please ensure children are able to fasten their own shoes.



# French



Children will have French lessons weekly with Mrs Hewson. They will look at basis vocabulary and phrases and focus on oral and written skills.

# Music



Children will learn Ukulele during the Spring Term.

# Our Curriculum

All age related standards and key vocab can be found on the school website.



# Assessment

End of term assessments

End of topic assessments in maths, history, science and geography.

Weekly spelling and times table test



Children are judged as working towards the expected standard, working at the expected standard and working at greater depth.



# Sharing news

We will share all our news and show off our work on our class blog:

[https://www.stoswaldsnewcastle.co.uk/web/friday\\_22nd\\_september\\_2023/664280](https://www.stoswaldsnewcastle.co.uk/web/friday_22nd_september_2023/664280)

X – formally Twitter will also regularly be updated under the handle @StOswaldsRCgos

# Labelling

Could we please ask you to clearly label all your child's clothing and shoes, as this will ensure all misplaced articles can be returned to you as quickly as possible.



# Communication

Feel free to call or email  
with any questions or to  
share information

Mrs Hall Murray

[year3@stoswaldsnewcastle.  
co.uk](mailto:year3@stoswaldsnewcastle.co.uk)

